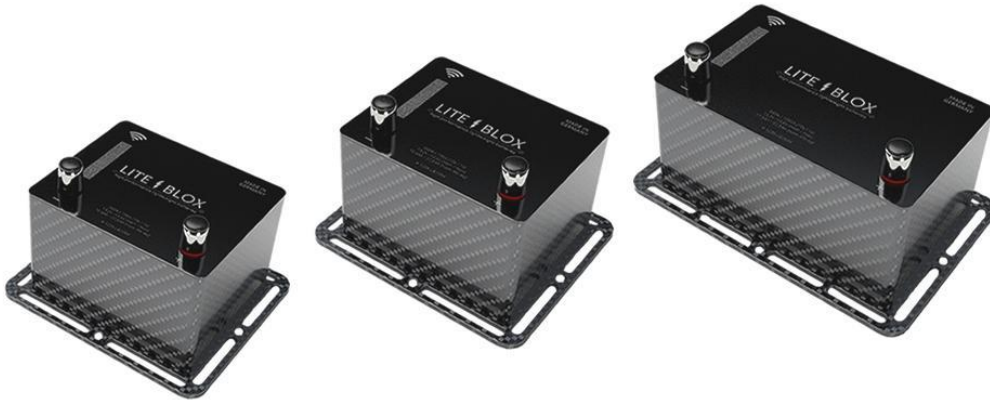
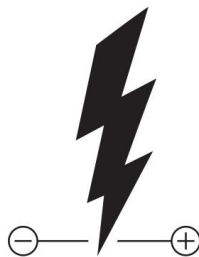


# Shipping Policy



Please note the following regulations for shipping our Products LITE BLOX accumulator (LB) and contact us in advance if anything is unclear.

Revision: April 2020



powered by:

LITEWERKS GmbH  
Robert-Bosch-Str. 18  
D-78467 Konstanz  
+49(0)7533/9929001  
info@liteblox.com  
www.liteblox.com

## general

- the LB must be protected against short circuit (+ permanently cover the pole)
  - do not charge or use the LB at least 24 hours before shipping
- completely discharge the LB before shipping via a resistor (e.g. 12V light bulb or vehicle lighting)  
discharge on current models with shutdown #E / #F series until the LB disconnects itself
- instruction of the responsible employees (B2B only)

## packaging

- shipping in two boxes (inner or original box plus outer packaging)
- sufficient filling material and strong outer packaging (carton)
- the inner packaging must completely enclose the battery

## shipping

- declare the package as a "limited quantity" SV188 (UN3480) Print out the sticker below and attach it to the outside of the package so that it is clearly visible
- shipping to other EU countries / from other EU countries only after prior agreement
- no air freight shipping!
- address: LITEWERKS GmbH / Robert-Bosch-Str. 18 / D-78467 Konstanz

