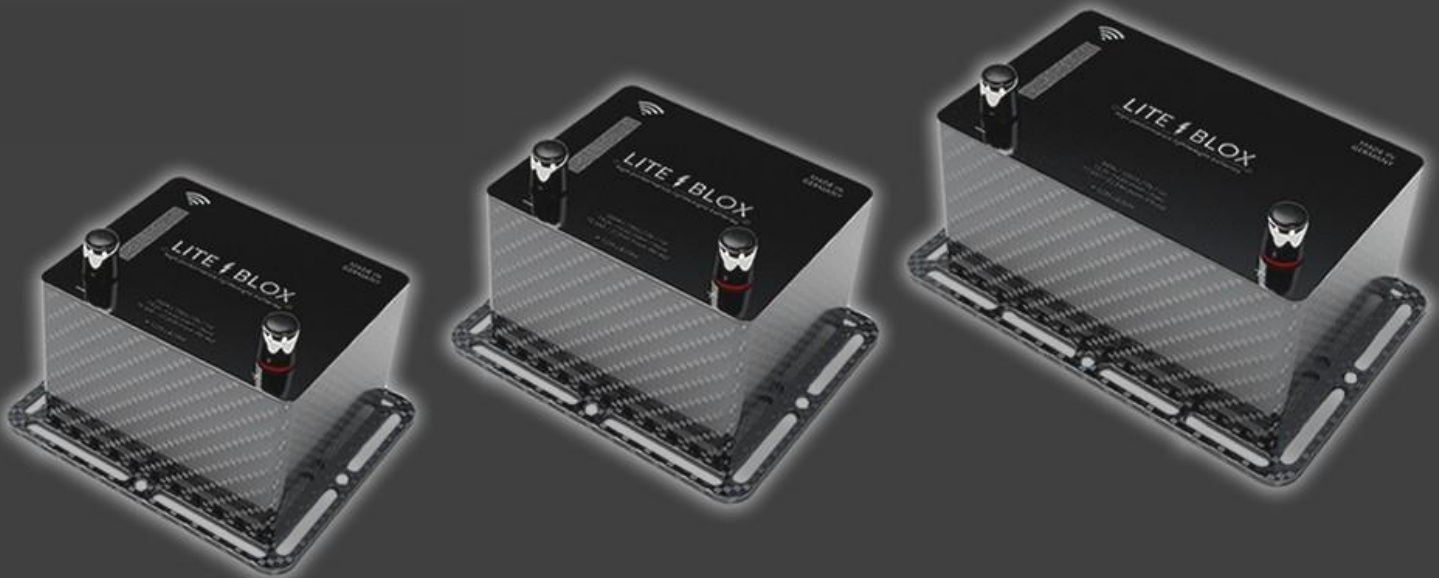


LITE ⚡ BLOX

high performance lightweight batteries

customer information

LITE⚡BLOX batteries (**GEN4**)

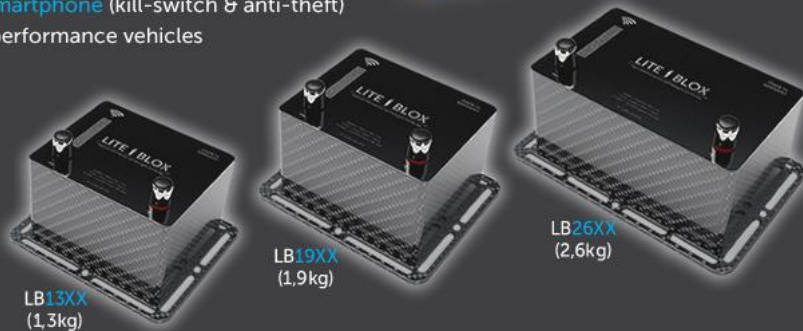


revision: May 2018

The (r)evolutionary car battery

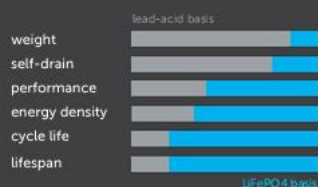
- full replacement of your heavy car battery with **less volume & weight**
- latest storage technology, implemented in a **lightweight** housing concept
- misuse protected by an **intelligent** power electronics
- wireless data monitoring & remote **operation via smartphone** (kill-switch & anti-theft)
- **highly engineered** for plug'n'play use in common performance vehicles

++ NEW GEN4 ++
Active Vehicle Anti Theft
Intelligent Kill Off Switch



setting new standards in weight reduction

LITEBLOX replace the heavy lead-acid battery by less weight & volume, saving up to **25kg (55lbs)** while providing significant advantages:



original ratio

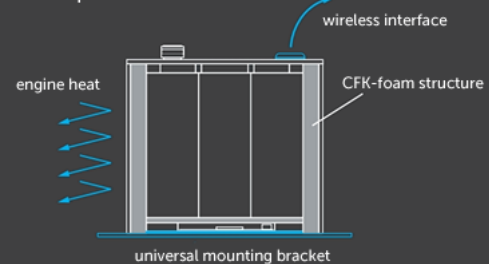
our innovative lightweight concept

Our innovative housing concept is shielding the cells from thermal plus mechanical influences and therefore allows usage under extreme conditions, providing extended lifespan and safety.

An intelligent electronics is monitoring the charge status permanently and protects the battery cells from misuse by an implemented powerswitch with additional remote function via smartphone.

The integrated mounting bracket provides variable installation for optimal weight balance in your vehicle.

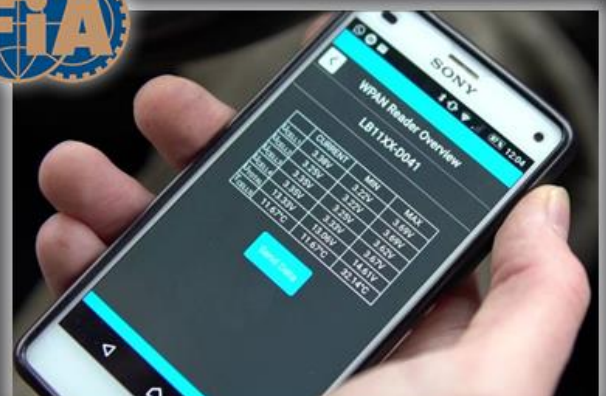
concept



integrated kill-switch & vehicle anti-theft

Our **intelligent electronics** is monitoring the charge status permanently and protects the battery cells from misuse by an implemented switch with two additional features (**FIA tested**):

- 1.) **I.K.O.S.** - Intelligent Kill-Off Switch
full disconnection via smartphone, similar to the common FIA kill switch (for emergency or extended sitting periods)
- 2.) **A.V.A.T.** - Active Vehicle Anti Theft
while all consumers are still being provided with energy, the LITEBLOX will instantly shut down at any theft attempt



LITEBLOX LB13XX



Our lightest high performance starter battery model comes within a thermally & mechanically decoupled CFK housing with implemented bracket plus intelligent electronics for extended control via smartphone.

- engineered and built by hand in Germany -

MSRP: 668,07 Eur (excl. VAT)

MSRP: 795,00 Eur (incl. VAT)

technical data

- weight: 13XXgrams (excl. poles) **
- dimension: 149 x 123 x 100mm (l x b x h)**
- voltage: 13,2V / 15,2V (nom / max)
- capacity: 7,5Ah / 23Ah (nom / Pb-eq)
- current: 360A / 450A (10s / 1s pulse at RT)**
- FIA tested & DMSB homologated (*Lithium Ion battery RLB2016-27/17*)
- lifespan: 3-5x compared to the OEM battery*
- connection: OEM clamp onto the battery poles (DIN) or via ring terminal (M6)
- delivery scope: LITEBLOX + pole caps + mounting material + manual + promotion

application

- 2-4 cylinder engines (1000-2500 ccm)*
- limited daily car use (vehicle parking periods 1-3 weeks)*
- not for the use in applications with intelligent alternator control (IBS / IAC) therefore use our larger models LB19XX / LB26XX
- not for the use in applications with energy recuperation (KERS) – therefore use our LB26XX model
- typical applications: *VW Beetle, Polo, Golf (1-4 I-IV) / Alfa Romeo 4C / Renault Clio RS 1 & 2, Megane RS 1 & 2 / Citroen Saxo / Westfield Caterham / Super 7 / Ford Fiesta, Escort, Focus ST RS / Fiat Abarth 500 / Opel Corsa, Astra / Honda Civic / Hyundai Genesis / Mitsubishi Colt, Lancer EVO / Subaru BRZ Impreza WRX STI / BMC Mini / Nissan 350Z 370Z SX200 / Seat Leon, Ibiza / Toyota GT86 / Mazda MX5 3 MPS / Lancia Delta / Lotus Elise...*

LITEBLOX LB19XX



Our mid-size high performance starter battery model comes within a thermally & mechanically decoupled CFK housing with implemented bracket plus intelligent electronics for extended control via smartphone.

- engineered and built by hand in Germany -

MSRP: 920,17Eur (excl. VAT)

MSRP: 1095,00Eur (incl. VAT)

technical data

- weight: 19XXgrams (excl. poles)**
- dimension: 149 x 123 x 100mm (l x b x h)**
- voltage: 13,2V / 15,2V (nom / max)
- capacity: 12,5Ah / 38Ah (nom / Pb-eq)
- current: 600A / 750A (10s / 1s pulse at RT)**
- FIA tested & DMSB homologated (*Lithium Ion battery RLB2016-26/17*)
- lifespan: 3-5x compared to the OEM battery*
- connection: OEM clamp onto the battery poles (DIN) or via ring terminal (M6)
- delivery scope: LITEBLOX + pole caps + mounting material + manual + promotion

application

- 4-8 cylinder engines (2500-4000 ccm)*
- limited daily car use (vehicle parking periods 3-5 weeks*)
- for the use in applications with intelligent alternator control (IBS / IAC)
- not for the use in applications with energy recuperation (KERS) – therefore use our LB26XX model
- typical applications: *Audi A1 A2 A3 A4 TT / BMW E-Serie 1er 3er 5er 1M M3 / Alfa Romeo Giulia / Mini Cooper S Works (BMW) / Mazda 5 RX7 RX8 / Nissan 350Z 370Z GT-R R32 R33 R34 R35 Skyline / Renault Clio RS 2 3, Megane RS 2 3 / Toyota Supra / Ford Mustang / VW (4-7 IV-VII), Golf clubsport R, Passat, Scirocco, Multivan T4 T5 / Porsche 911 986 987 996 997 GT RS Cayman Boxster / Lotus Elan Exige Evora Europa / Lexus IS (F)*

LITEBLOX LB26XX



Our flagship high performance starter battery model comes within a thermally & mechanically decoupled CFK housing with implemented bracket plus intelligent electronics for extended control via smartphone.

- engineered and built by hand in Germany -

MSRP: 1424,37Eur (excl. VAT)
MSRP: **1695,00Eur (incl. VAT)**

technical data

- weight: 26XXgrams (excl. poles)**
- dimension: 202 x 123 x 100mm (l x b x h)**
- voltage: 13,2V / 15,2V (nom / max)
- capacity: 17,5Ah / 54Ah (nom / Pb-eq)
- current: 840A / 1050A (10s / 1s pulse at RT)**
- FIA tested & DMSB homologated (*Lithium Ion battery RLB2016-25/17*)
- lifespan: 3-5x compared to the OEM battery*
- connection: OEM clamp onto the battery poles (DIN) or via ring terminal (M6)
- delivery scope: LITEBLOX + pole caps + mounting material + manual + promotion

application

- 4-12 cylinder engines (2500-9500 ccm)**
- daily car use with minor restrictions (vehicle parking periods 5-8 weeks)*
- for the use in applications with intelligent battery management systems incl. energy recuperation (KERS)
- typical applications: *Audi A5 A6 A7 S7 A8 S8 R8 S RS / BMW F-Serie M2 M3 M4 M5 M6 Z-Serie / Mercedes Benz C63 C65 E63 E65 SL GTS SLS / Porsche 911 9X1 981 991 GT RS Boxster Cayman Macan / Nissan GT-R R35 / Ferrari 458 488 F12 F40 F50 / Lamborghini Diabolo Gallardo Murcielago Huracan Aventador / Spyker C8 C12 / Koenigsegg CCR CCX Agera / Jaguar F-Type / Pagani Zonda Huayra / Bugatti Veyron / Mosler MT900 / Ford GT / Dodge Charger Challenger / AC Cobra / Chevrolet Camaro Corvette / Lexus ES LS RC SC*

* depending on usage, setup, peripheral, etc.

** since every LITEBLOX is built by hand, there might be marginal deviations in these values

LITE⚡BLOX vehicle-configurator:
www.liteblox.de/fahrzeug-konfigurator-liteblox-batteries/

online-FAQ:
en.liteblox.de/frequently-asked-questions-lithium-car-battery/

*LITE⚡BLOX App for maintenance via smartphone:
Android → www.play.google.com/store/apps/details?id=de.liteblox.litebloxreader
IOS → www.itunes.apple.com/de/app/liteblox-remote/id1343292009



powered by:

LITEWERKS GmbH
Robert-Bosch-Str. 18
D-78467 Konstanz
+49 (0) 7533 / 9929000
info@liteblox.de
www.liteblox.de
www.facebook.com/liteblox.batteries