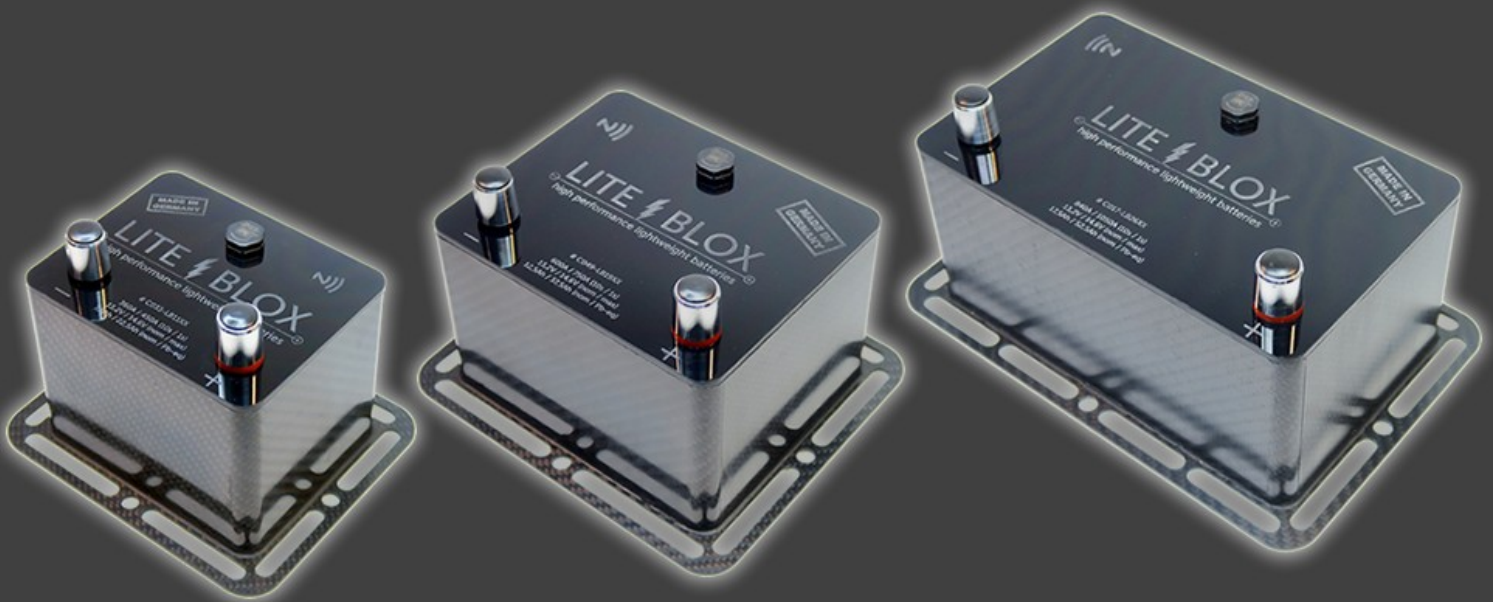


LITE BLOX

high performance lightweight batteries

Customer Information

LITEBLOX batteries ([GEN3](#))



The (r)evolutionary car battery

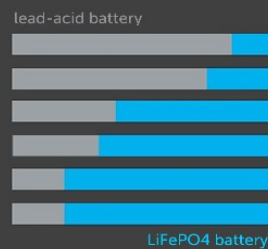
Our LITEBLOX batteries have been extensively engineered to set new standards in subtracting weight from your vehicle.

We use latest LiFePO4 storage technology within in an innovative carbon fibre housing, to substitute your standard starter battery with less volume & weight.

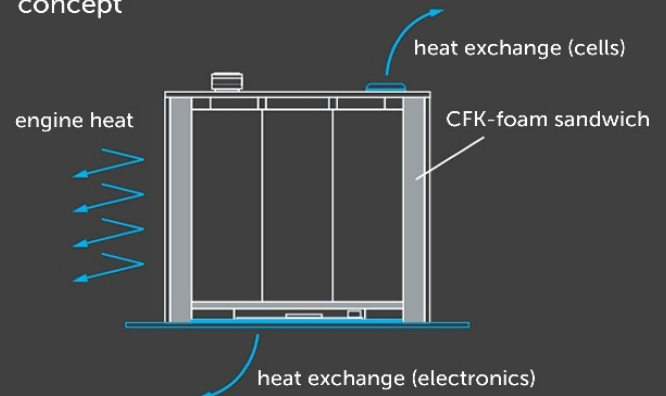
Engineered for professional motorsports & built by hand in our manufactory, we guarantee for outstanding quality & strictly premium materials - [made in Germany](#).

advantages

weight
self-drain
performance
energy density
charge-cycles
life span



concept



Our innovative housing concept is shielding the cells from thermal plus mechanical influences & therefore allows usage under extreme conditions, providing extended lifespan & safety.

The intelligent electronics is monitoring the charge status permanently and reports misuse by an acoustic warning.

An integrated bracket provides variable installation for optimal weight balance in your vehicle.

features

- saves 15-20kg to the standard starter battery
- plug'n'play replacement
- works with standard alternators
- maintenance-free
- intelligent electronics with acoustic warning for deep charging
- WPAN interface for wireless performance monitoring via smartphone APP
- latest premium cell technology (A123 ANR26650M1B V3)
- rapid charging (optimal für Start-Stopp)
- marginally self-drain when not in use
- fail safe due to innvative concept and premium materials
- mountable in any position (interior use allowed)
- tested in professional motorsport

LITEBLOX LB11XX



Our lightest high performance starter battery LB11XX (GEN3) in a CFK housing with implemented bracket, intelligent electronics and WPAN-interface – engineered and built by hand in Germany.

price: 543,70Eur excl. VAT

technical data

- weight: 11XXg**
- dimensions: 123 x 97 x 100mm (l x b x h)
- voltage: 13,2V / 14,6V (nom / max)
- capacity: 7,5Ah / 22,5Ah (nom / Pb-eq)
- cranking current: 360A / 540A* (10s pulse / peak @ RT)
- operating temperature: -20 to +80°C
- lifespan: 3-5x compared to the OEM battery*
- connection: OEM clamps onto the battery poles (DIN) or via ring terminal (M8)
- certificates: product complies with directives 2001/95/EG 2011/65/EU 2006/66/EG
- delivery scope: LITEBLOX + pole caps + mounting material V2A + stickers + manual

application

- 2-4 cylinder engines (1000-2500 ccm)
- limited daily car use (vehicle parking periods 1-3 weeks*)
- sportscar / motorsport / custom bike / tuning / car-hifi / drones / boats ...
- not for the use in applications with intelligent alternator control (IBS / IAC) – please therefore use our larger models LB19XX or LB26XX!

* depending on usage, setup, peripheral, etc.

** since every LITEBLOX is built by hand, there might be marginal deviations in these values

LITEBLOX LB19XX



Our allround high performance starter battery model comes in a CFK housing with implemented bracket, intelligent electronics and WPAN-interface – engineered and built by hand in Germany.

price: 795,80Eur excl. VAT

technical data

- weight: 19XXg**
- dimensions: 149 x 123 x 100mm (l x b x h)**
- voltage: 13,2V / 14,6V (nom / max)
- capacity: 12,5Ah / 37,5Ah (nom / Pb-eq)
- cranking current: 600A / 900A* (10s pulse / peak @ RT)
- operating temperature: -20 to +80°C
- lifespan: 3-5x compared to the OEM battery*
- connection: OEM clamps onto the battery poles (DIN) or via ring terminal (M8)
- certificates: product complies with directives 2001/95/EG 2011/65/EU 2006/66/EG
- delivery scope: LITEBLOX + pole caps + mounting material V2A + stickers + manual

application

- 4-8 cylinder engines (2500-4000 ccm)
- daily car use with restrictions (vehicle parking periods 3-5 weeks*)
- sportscars / tracktools / motorsport / tuning / Car-Hifi / boats...
- for the use in applications with intelligent alternator control (IBS / IAC), the vehicle's electronics ECU has to be adapted beforehand (please communicate in this case)
- for the use in applications with regenerative brake system (KERS) use our model LB26XX only

LITEBLOX LB26XX



Our flagship high performance starter battery model comes in a CFK housing with implemented bracket, intelligent electronics and WPAN-interface – engineered and built by hand in Germany.

price: 1243,70Eur excl. VAT

technical data

- weight: 26XXg**
- dimensions: 202 x 123 x 100mm (l x b x h)**
- voltage: 13,2V / 14,6V (nom / max)
- capacity: 17,5Ah / 52,5Ah (nom / Pb-eq)
- cranking current: 840A / 1260A* (10s pulse / peak @ RT)
- operating temperature: -20 to +80°C
- lifespan: 3-5x compared to the OEM battery*
- connection: OEM clamps onto the battery poles (DIN) or via ring terminal (M8)
- certificates: product complies with directives 2001/95/EG 2011/65/EU 2006/66/EG
- delivery scope: LITEBLOX + pole caps + mounting material V2A + stickers + manual

application

- 4-12 cylinder engines (2500-9500 ccm)
- daily car use without restrictions (vehicle parking periods 5-8 weeks*)
- supercar / hypercars / tracktools / motorsport / Car-Hifi / boats ...
- for the use in applications with intelligent alternator control (IBS / IAC) the vehicle's electronics ECU has to be adapted beforehand (please communicate in this case)
- for the use in applications with regenerative brake system (KERS)

charger LB100I



Our microprocessor based waterproof Charger can be used to charge any LITEBLOX battery model. With the 5-step charging program the battery will be charged safely in a fully automatic mode.

price: 125,21Eur excl. VAT

technical data

- model: LB100I
- input / output: 100VAC - 240VAC @ 50 - 60Hz / 100W
- operating temperature: -10°C bis +40°C
- dimensions: 180x83x45mm (lxbxh)
- weight: 1160g
- delivery scope: charger, charging cable with claws, instruction manual

features

- convection cooled IP68 housing
- short circuit and reverse polarity protection
- high frequent switching technology
- LED's to indicate operation and charging status
- 5-Step charging technology with automatically restart charging
- safety charging with reduced charging current
- indicating a non-chargeable ('dead battery') condition

use our configurator for choosing the right model for your vehicle:
www.en.liteblox.de/liteblox-configurator-the-right-battery-for-your-car/

see more informations in our Online-FAQ:
www.en.liteblox.de/frequently-asked-questions-lithium-car-battery/

order directly in our Online-Shop:
www.en.liteblox.de/shop/



Made in Germany

by:

WeightWorks GmbH

Kaltbrunnerstr. 24

D-78476 Allensbach

+49 (0) 7533 / 9929000

www.liteblox-batteries.com

www.facebook.com/liteblox.batteries